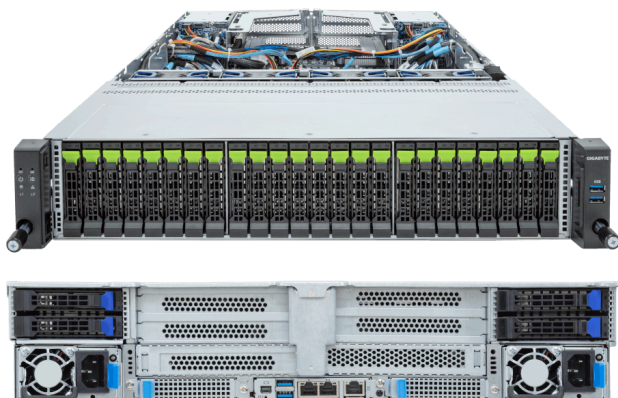
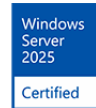


# R283-Z96-AAE1 (Rev. 1.x)

Rack Server - AMD EPYC™ 9004 Server Processors - 2U DP 24+4-Bay Gen5 NVMe/SATA/SAS-4 Platinum



## Key Features

- Dual AMD EPYC™ 9004 Server Processors
- 12-Channel DDR5 RDIMM per CPU with 24 x DIMMs
- 2 x 1 Gb/s LAN ports via Intel® I350-AM2
- 24 x 2.5" Gen5 NVMe hot-swap bays
- 4 x 2.5" SATA/SAS-4 hot-swap bays on the rear side
- 2 x M.2 slots with PCIe Gen3 x4 and x2
- 1 x FHHL PCIe x16 slot with Gen5 x16 lanes
- 1 x OCP NIC 3.0 PCIe Gen5 x16 slot
- Compatible with SupremeRAID™ by Graid Technology
- 1+1 2000 W 80 PLUS Platinum redundant power supplies

## Applications

Networks Server, Servers for Hybrid/Private Cloud...

## Specification

<b>Dimensions</b>	2U (W438 x H87.5 x D815 mm)	<b>PCIe Expansion Slots</b>	1 x FHHL x16 (Gen5 x16) 1 x OCP NIC 3.0 (Gen5 x16), Support NCSI
<b>Motherboard</b>	MZ93-FS1	<b>I/O Ports</b>	<b>Front:</b> 2 x USB 3.2 Gen1 <b>Rear:</b> 2 x USB 3.2 Gen1, 1 x Mini-DP, 2 x RJ45, 1 x MLAN
<b>CPU</b>	AMD EPYC™ 9005 Server Processors AMD EPYC™ 9004 Server Processors Dual processors, cTDP up to 300 W - EPYC 9654 cTDP up to 400 W	<b>Backplane Board</b>	<b>Front - CBP2081:</b> PCIe Gen5 x4 <b>Front - CBP20G0:</b> PCIe Gen5 x4 <b>Rear - CBP2025:</b> SATA 6 Gb/s or SAS-4 24 Gb/s
<b>OS Compatibility</b>	<a href="#">OS Support List</a>	<b>TPM</b>	1 x TPM header (SPI), Optional TPM 2.0 kit: CTM010
<b>Socket</b>	2 x LGA 6096 (Socket SP5)	<b>Power Supply</b>	1+1 2000 W 80 PLUS Platinum redundant power supplies AC Input: 100-240 V
<b>Chipset</b>	System on Chip	<b>System Management</b>	ASPEED® AST2600 Baseboard Management Controller GIGABYTE Management Console web interface
<b>Memory</b>	12-Channel DDR5 RDIMM, 24 x DIMMs Up to 4800 MT/s	<b>System Fans</b>	4 x 80x80x38mm
<b>LAN</b>	2 x 1 Gb/s LAN (1 x Intel® I350-AM2), Support NCSI 1 x 10/100/1000 Mb/s Management LAN	<b>Operating Properties</b>	Operating: 10°C to 35°C, 8% to 80% (non-condensing) Non-operating: -40°C to 60°C, 20% to 95% (non-condensing)
<b>Video</b>	Integrated in ASPEED® AST2600 - 1 x Mini-DP	<b>Packaging Content</b>	1 x R283-Z96-AAE1 2 x CPU heatsinks 1 x Mini-DP to D-Sub cable 1 x 2-Section Rail kit
<b>Storage</b>	<b>Front hot-swap:</b> 24 x 2.5" Gen5 NVMe <b>Rear hot-swap:</b> 4 x 2.5" SATA/SAS-4 [1] <b>Internal M.2:</b> 1 x M.2 (2280/22110), PCIe Gen3 x4 1 x M.2 (2280/22110), PCIe Gen3 x2  [1] SAS card is required to support SAS drives.	<b>Ordering Part Numbers</b>	6NR283Z96DR000ABE1*
<b>RAID</b>	Require RAID add-in cards  <b>Optional compatible RAID Cards:</b> NVMe/NVMe-oF RAID Cards with SupremeRAID™ by Graid Technology RAID Card models: SR-1000-FD32, SR-1010-FD32 Support RAID 0/1/5/6/10	<b>Optional Parts</b>	- RAID card (SR-1000-FD32): 25FC1-SRBUN0-AFS - RAID card (SR-1010-FD32): 25FC1-SRBUN4-AFR - 3-Section Rail kit (Supports CMA): 25HB2-A56121-K0R - Cable Management Arm: 25HB1-R18300-K0R



Learn more at: <https://www.gigabyte.com/Enterprise>

\* All specifications are subject to change without notice. Please visit our website for the latest information.

\* All trademarks and logos are the properties of their respective holders.

© 2026 Giga Computing Technology Co., Ltd. All rights reserved.

Last updated: Jun 24, 2026

Designed by

